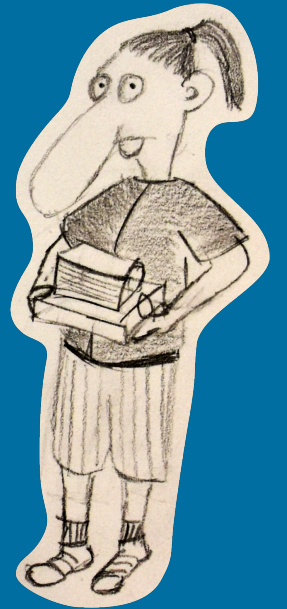
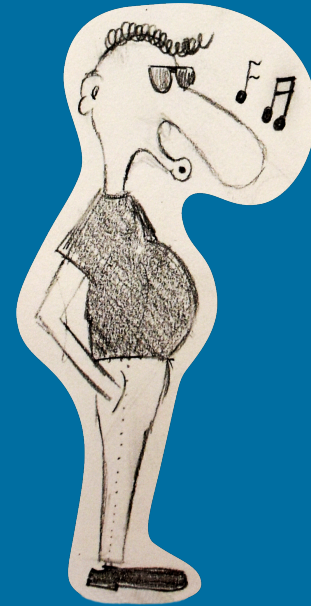
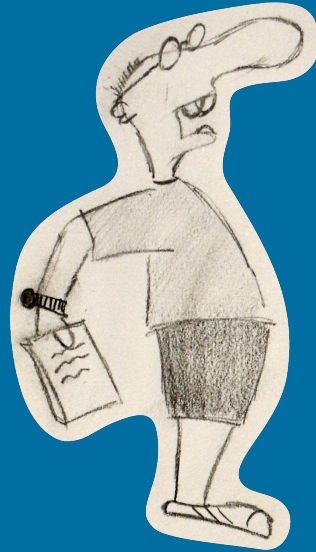
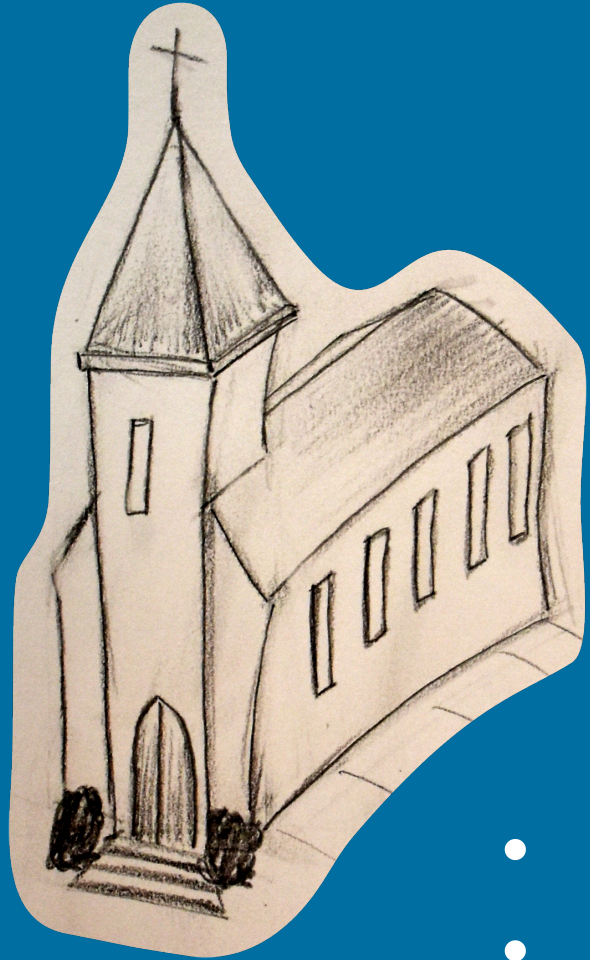


COLLABORATIVE LEARNING SPACES

Student Innovedum 2016

Learning Community



- Enhanced learning
- Communication skills improved
- Feeling of belonging to a community

Current Situation

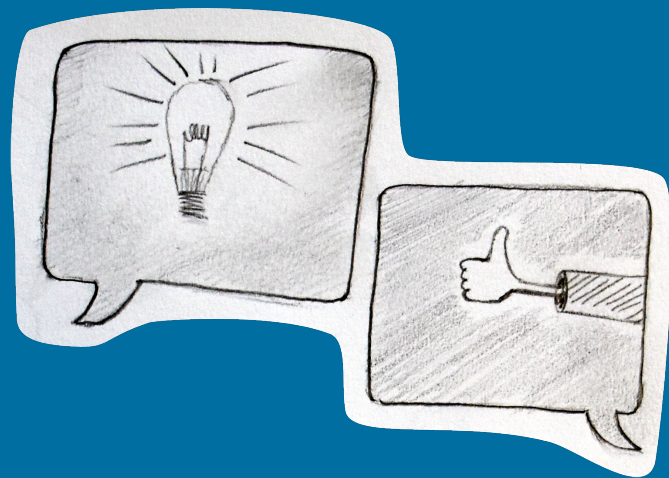


- Hard to find available places
- Conflicts in usage purposes



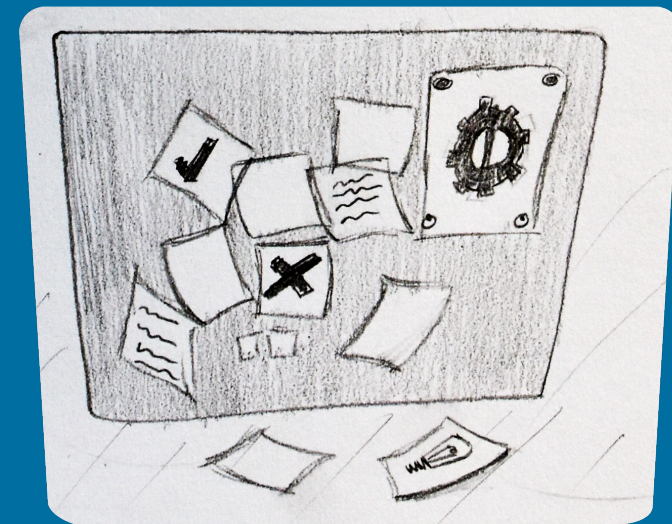
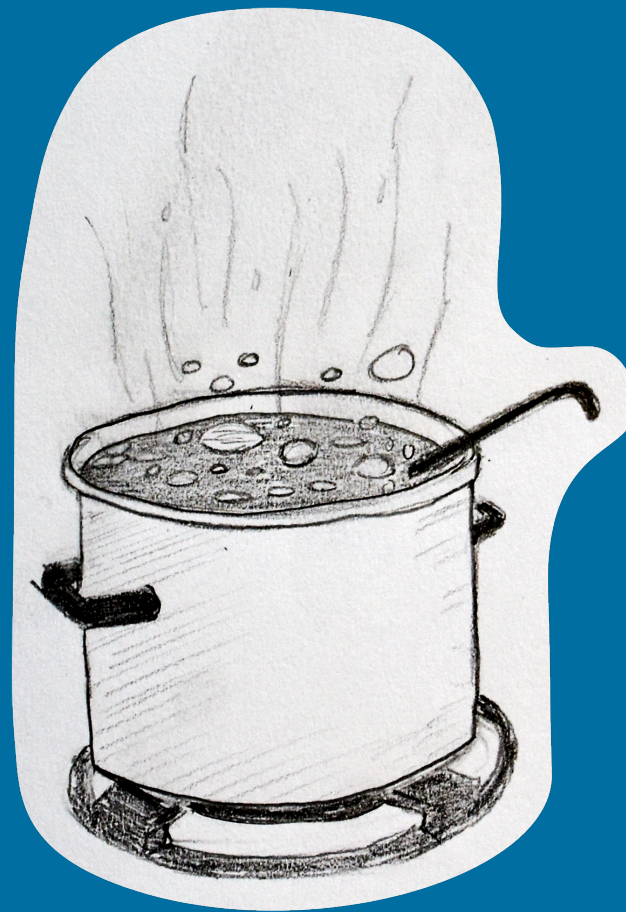
- Rooms cannot be booked by students
- Equipment, flexibility and attractiveness are missing

Lunch Meeting



Goals

- Connect projects
 - Share ideas
 - Share knowledge
 - Receive feedback
- > Ressources saved



Next Steps

- Contact stakeholders at the ETH and experts
- Organize the first meeting
- Support the booking system through EduApp